



Lightweight and quick to deploy, the inflatable Four Person Decontamination Unit from MFC International allows for rapid response in a decontamination scenario.

Fully inflatable, the Decontamination Unit can be set up in a matter of minutes, and will stay standing without continuous inflation. With no mechanical framework the shelters are lightweight to transport and compact to store.

Raised floor panels prevent contact with contaminated shower wash-off, which is collected in a chemically resistant sump. Sleeves for pumped extraction of contaminated water are included as standard.

Showers can be used on hard or soft standing, and guy ropes are provided for securing in position during inclement weather.

FEATURES

- Lightweight and easily portable
- Set up within a matter of minutes and will stay standing without continuous inflation
- Raised floor panels prevent contact with contaminated shower wash off which is collected in a chemically resistant sump
- Sleeves for pumped extraction of contaminated water are included as standard
- Can be used on hard or soft standing and guy ropes are provided for securing in position
- Minimal training, servicing and maintenance costs

USED FOR

- Decontamination scenarios

SUPPLIED WITH

- Valise
- Repair kit
- Inflation hose - 1m (for use with 8 bar regulator)

OPTIONS & ACCESSORIES

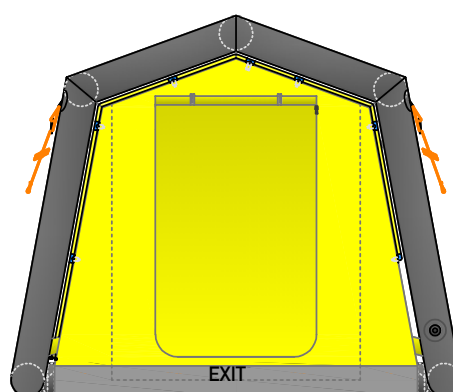
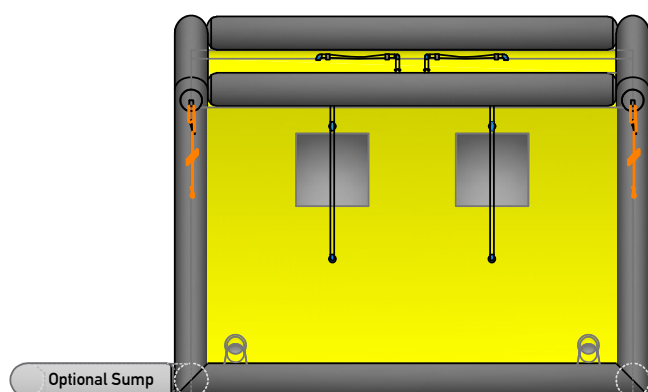
- Customer branding
- Electric inflater
- 8 bar regulator
- External inflatable sump after exit door (inflates with shower)



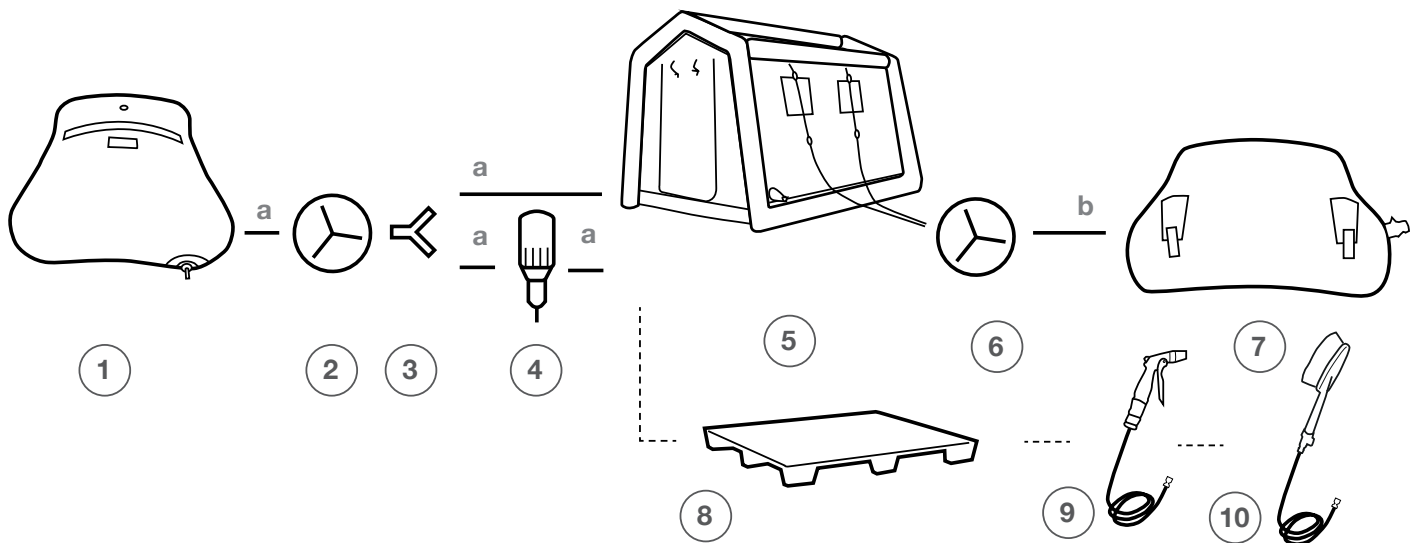
TECHNICAL DATA

	MD4	MD4 WITH SUMP
Product Code	DSW017	DSW017/002
Length (cm)	327	327 + 120 (Sump)
Int. Length (cm)	304	304
Width (cm)	310	310
Int. Width (cm)	250	250
Height (cm)	260	260
Int. Height (cm)	200	200
Working Pressure (bar)	0.22	0.22
No. of Chambers	1	1
Air Requirements (ltr)	1370	1630
Max. Water Inlet Pressure (bar)	3	3
Recommended pump flow capacity (ltr)	10 ltr/min per nozzle	10 ltr/min per nozzle
Number of Shower Nozzles	12	12
Number of Shower Hose/Brush Connectors	2	2
Number of Tubing Sleeves	4	4
Glove	No	No
Windows	4	4
Pack Size (cm)	123 x 69 x 45	133 x 69 x 51.5
Weight (kg)	28	30

DETAIL DRAWING



SYSTEM SCHEMATIC & COMPONENTS



Components

1



Clean Water Pillow Tank (1000ltr)
(1x WS0028)
- see website for other sizes

2



Inlet Water Pump
(1x DSA002)

3



Y-Peice
(1x DSA009)

4



Dosatron with Trolley
(1x DSA005)

5



Four Person Decon Shower
(Yellow shower DSW017)
(Yellow shower & sump DSW017/002)

6



Submersible Pump
in Single Decon
(1x DSA004 - 240V,
DSA003 - 110V)

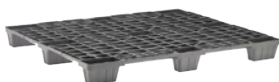
7



Waste Water Pillow Tank (1000ltr)
(1x WS0017)
- see website for other sizes

Accessories

8



Pallets for Decon Floor
(x5 140027)
Pallet with submersible pump cut-out
(x1 DSA007)

9



Spray Gun & Hose
(DSA008)

10



Hand Brush & Hose
(180035)

Hoses (with Camlock Couplings)

a **Green Hose - Clean Water (2m)**
Female to Female Camlock Hose
(4x 630004)

b **Clear Hose - Waste Water (3.5m)**
Female to Female Camlock Hose
(1x 630006)

N.B. CAMLOCK couplings used on components and hoses as standard, other couplings are available on request.